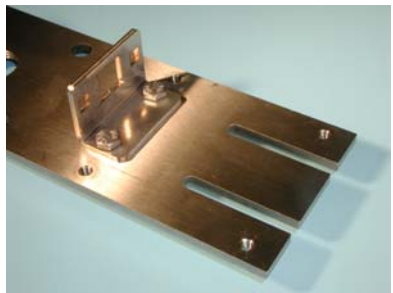
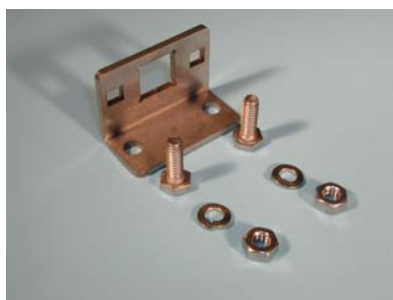




MODEL 200AR ASSEMBLY INSTRUCTIONS



Attach the Slide Bracket to the base using 1/4-20 x 1/2" hex bolts with lock washer and nut, tighten.

1



Attach Adjusting Rod bracket using 1/4"-20 x 5/8" carriage bolts with Lock washer and nut, do not tighten.

2



Assemble roller slide. Use (1) 5/16-18 x 1" hex bolt, bearing and 5/16 lock washer.

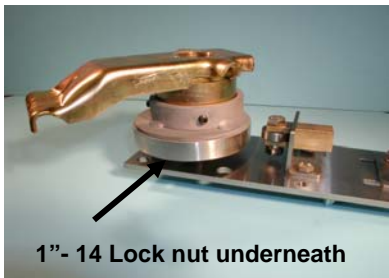
3



Screw (3) set screws into cam assembly. Mount to hinge plate just below rubber bearing seal. Position determines where boom will rotate to.

4

MODEL 200AR ASSEMBLY INSTRUCTIONS (continued)



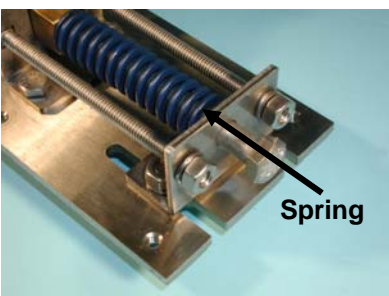
Insert roller slide assembly and adjusting bolts into slide bracket. Screw hinge plate assembly to the Auto Return mounting plate. Attach locking nut on reverse side.

5



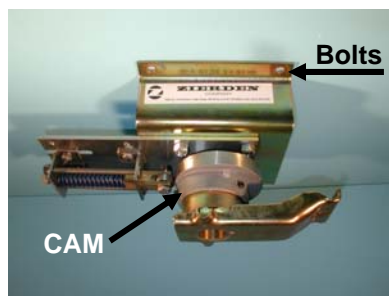
Insert spring between roller slide and adjusting bracket. Screw 3/8"-16 x 4" bolt through center.

6



Screw (2) 1/4"-20 x 4" Carriage nuts. These are used to adjust tension on spring.

7

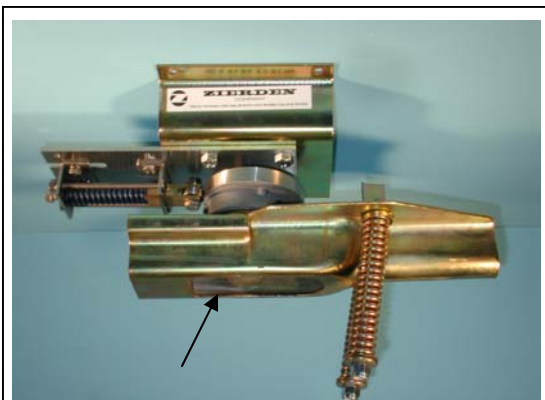


Bolt Auto Return unit to the mounting base. Mounting Base must have short 3/8 " x 3/4" long bolts. They may be screwed in from the bottom or the top.

Rotate cam assembly to return position desired.

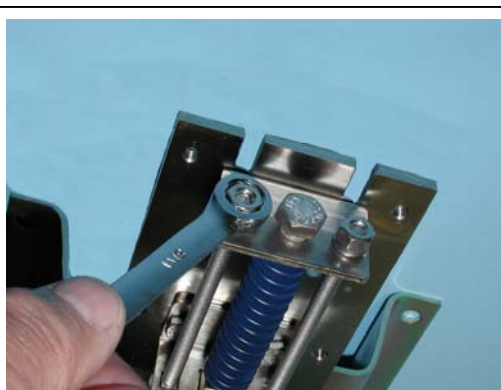
8

MODEL 200AR ASSEMBLY INSTRUCTIONS (continued)



Install Boom Body assembly to hinge plate.

9



Adjust spring tension by tightening the two 1/4" nuts on adjusting rods. Tension should be strong enough to allow boom to rotate back to its desired position.

10



Fasten cover using 10-32 pan head screws. Cover should not protrude beyond the roller slide bracket.

11



THE ZIERDEN COMPANY

7355 SOUTH 1st STREET • OAK CREEK, WISCONSIN 53154 • PHONE (414) 764-6630 • FAX (414) 764-9763
www.zierden.com